



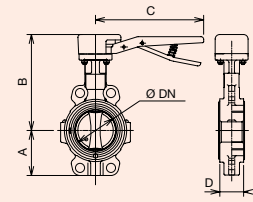
TILIS with notched ductile iron handlever PED 97/23/CE



**NOTCHED DUCTILE IRON HANDLEVER (PCF)**  
10 POSITIONS  
PADLOCKABLE

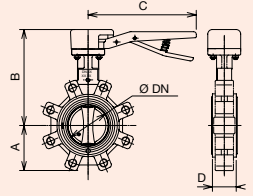
TILIS PCF - Centering lugs

DN	A	B	C	D
32	57	166	200	32
40	57	166	200	32
50	62	172	200	41
65	70	181	200	44
80	89	187	200	44
100	106	211	290	50
125	120	226	290	54
150	132	239	290	54
200	164	293	450	58



TILIS PCF - Tapped lugs

DN	A	B	C	D
32	57	166	200	32
40	57	166	200	32
50	62	172	200	41
65	70	181	200	44
80	89	187	200	44
100	106	211	290	50
125	120	226	290	54
150	132	239	290	54
200	164	293	450	58



316 L  
STAINLESS  
STEEL

EPDM/PTFE T°C +5°/+120° ▶ Food fluids, drinks, pharmaceutical and cosmetic fluids

DUCTILE IRON GGG40 BODY PFA 10 bar (water) / PS (p.84)



**TILIS  
WAFER TYPE**

(1) PS maxi = 6 bar

Flange rating PN 6/10/16/ASA 150

DN	EPDM/PTFE	Kg
32/40 <b>1</b>	149G 020 580	5,9
50	149G 013 015	5,8
65	149G 013 025	5,9
80	149G 035 261	6,2
100	149G 013 039	7,3
125	149G 013 047	7,6
150	149G 013 051	9,0
200	149G 038 871 (1)	12,9

DUCTILE IRON GGG40 BODY PFA 10 bar (water) / PS (p.84)



**TILIS  
LUG TYPE**

(1) PS maxi = 6 bar  
and PN16  
(2) PS maxi = 6 bar  
and PN10

Flange rating PN 10/16

DN	EPDM/PTFE	Kg
50 <b>2</b>	149G 016 787	5,6
65	149G 035 748	4,9
80	149G 035 580	7,2
100	149G 016 054	7,4
125	149G 016 789	8,4
150	149G 035 955	11,0
200	149G 038 872 (1)	20,0
200	149G 036 336 (2)	20,0

316 L  
STAINLESS  
STEEL MIRROR  
POLISHED

EPDM/PTFE T°C +5°/+120° ▶ Food fluids, drinks, pharmaceutical and cosmetic fluids

DUCTILE IRON GGG40 BODY PFA 10 bar (water) / PS (p.84)



**TILIS  
WAFER TYPE**

(1) PS maxi = 6 bar

Flange rating PN 6/10/16/ASA 150

DN	EPDM/PTFE	Kg
32/40 <b>3</b>	149G 019 335	5,9
50	149G 016 842	5,9
65	149G 016 843	6,1
80	149G 012 688	6,5
100	149G 016 844	7,9
125	149G 016 845	8,7
150	149G 016 846	10,3
200	149G 038 874 (1)	16,7

DUCTILE IRON GGG40 BODY PFA 10 bar (water) / PS (p.84)



**TILIS  
LUG TYPE**

(1) PS maxi = 6 bar  
and PN16  
(2) PS maxi = 6 bar  
and PN10

Flange rating PN 10/16

DN	EPDM/PTFE	Kg
50 <b>4</b>	149G 016 740	4,7
65	149G 016 741	4,9
80	149G 016 742	7,5
100	149G 016 743	7,4
125	149G 016 744	8,4
150	149G 016 745	11,0
200	149G 038 875 (1)	20,0
200	149G 038 876 (2)	20,0



SHUT OFF